

Astronomy accessories for sale

Eyepieces



Three APM Lunt 100° superwide eyepieces at 20mm, 13mm, and 9mm, plus an Explore Scientific 100° superwide, all available as a complete set. R9600 plus shipping. These come in a padded carry bag (blue) with its own accessories pouch supplied with eye patches, eyepiece tube caps, round snap-lid containers for filters or parts, a small LED hand torch, and a headband-style torch to read charts or find something in the dark. Each eyepieces comes in its own plastic bolt case as shown below. Eyepieces & kit available only as a complete set.



**Complete set as shown
R9600 plus shipping**



Desert Sky Astro **QBS Quick Balance System**



The Desert Sky Astro (Arizona, USA) QBS allows users to switch between eyepieces and accessories of differing weight without having to reposition the optical tube on the mount. The slidable counterweight system keeps the telescope balanced on the altitude axis at all pointing angles. QBS units are CNC machined from Dural aluminium alloy, with knurled knobs for finger-tight adjustment.

The flat mounting plate bolts on to dovetail brackets or parallax ring bolt holes. [See images here.](#)



R1200 plus shipping.

Forget-Me-Not dark site tool & parts kit

Setting up a scope at dusk after a long day's drive is not a good time to discover you accidentally forgot some infernally necessary doodad without which you cannot start observing. Hex-head wrenches and AAA batteries are cases in point. The sturdy box shown here is the fruit of years of cusswords and kicked tyres after discovering that some vital thingie is still lying on the kitchen table at home. You can call this the Rescue Remedy for 'If it can go wrong, it will go wrong'. From 1.2mm hex wrenches to Super Glue to eye patches to laser pointers, it's all in this box. Plus much more than can be listed here. Every mistake I've made could have been fixed if I'd had this box.

What's more, this box floats in the event you fall into a river whilst back-packing your gear into the mountains.





**R2800 for everything
except the shipping**

The words ‘too numerous to mention’ have real meaning here. All the items shown on these pages is about half of what the actual box contains. Above are the items inside the two opaque plastic trays shown in the top lid of the box on the previous page.

IMPORTANT NOTE: This offer *includes* the 3 plastic parts boxes shown starting 4 frames below.



Partial contents of the bottom bin. Other bin items are shown separately below. Everything shown in these pictures is included *except for the two eyepieces above left (see below)*. Among the items included: lens cleaning fluid & microfibre cloths, cleaning cloths, shower-cap anti-dew OTA covers, complete 24-piece rotating drill (Dremel) set, small propane pencil torch, laser pointers in Lumicon collimatable brackets, wool mittens with finger holes, balaklava-style stocking cap, hooked elastic bands, compressed air tins, 2" tube caps, bolt cases, the three parts boxes shown below, and more.

Below: Kit includes 1.5 kg Losmandy sliding counterweight to balance scopes by sliding along a Vixen dovetail bar. The round weight is mounted on a threaded 1.5-inch-long shaft . The disc can be adjusted in or out by rotating it on the shaft. This is useful for balancing eyepieces of different weights and length on the other side of the scope.

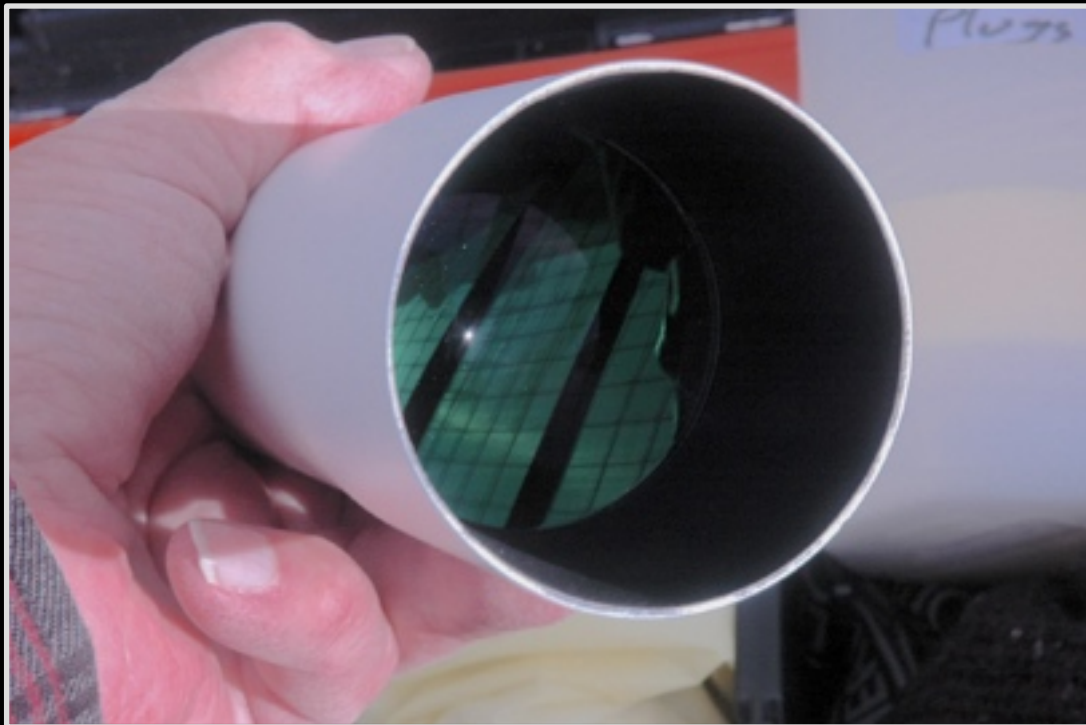




Two-inch APM illuminated reticle finder telescope and 3 large plastic bolt cases (not shown) are included with the box.



**Available
separately**



APM-Lunt 2-inch eyepieces. 9 mm 100° and 3.5 mm 110°, with bolt cases and original factory boxes. R2400 each plus shipping.

All the fiddly bits you've ever wanted, and more

The parts & tools in these boxes have been collected in hardware & machine-tool shows over the last decade. Many items here are practically Unobtainium in S Africa, unless you fancy a long shopping crawl in Jo'burg or CT.



Larger items box
(more items are included than shown)

Magnetic tray to hold myriad loose ferric items e.g. screws, nuts, washers, all those odd bits that get lost. The two magnets in this are very strong.

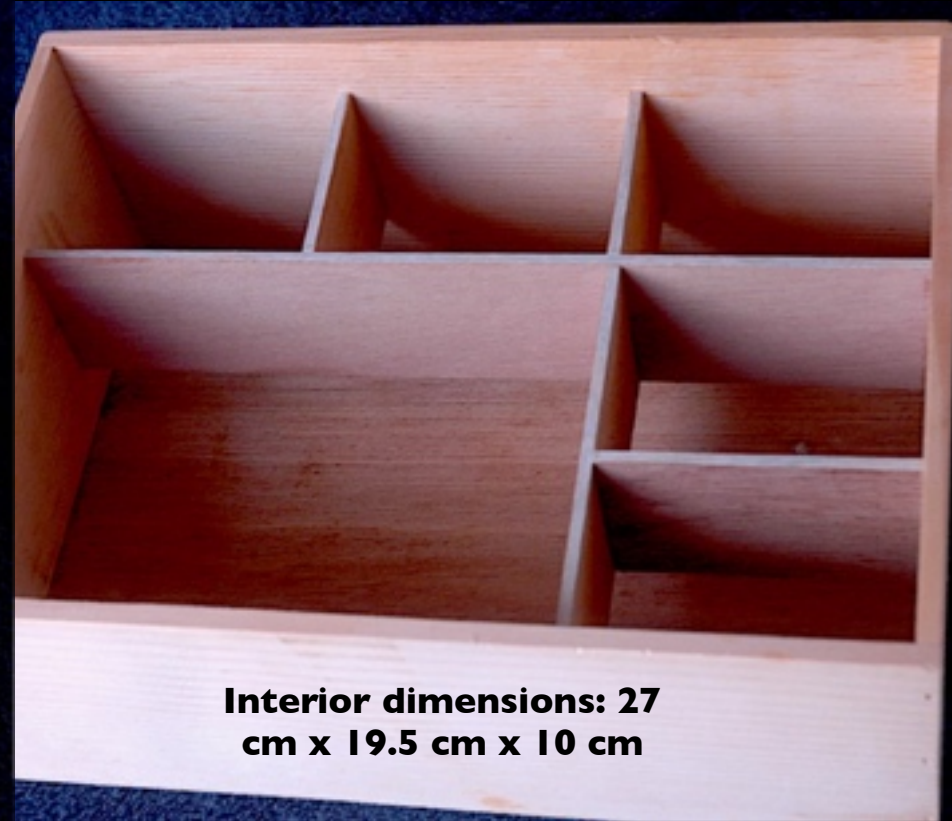
Watchmaker-style screwdrivers, multiple tweezer designs, multiple dental picks, springs, Delrin screws, & more.



If it's not here, you probably don't need it.



Partitioned wood eyepiece box for field use



They won't be rolling around your feet now. The smaller bins accommodate any of the eyepieces shown above when standing vertically on their base. **R600 plus shipping.**

Partitioned wood equipment box

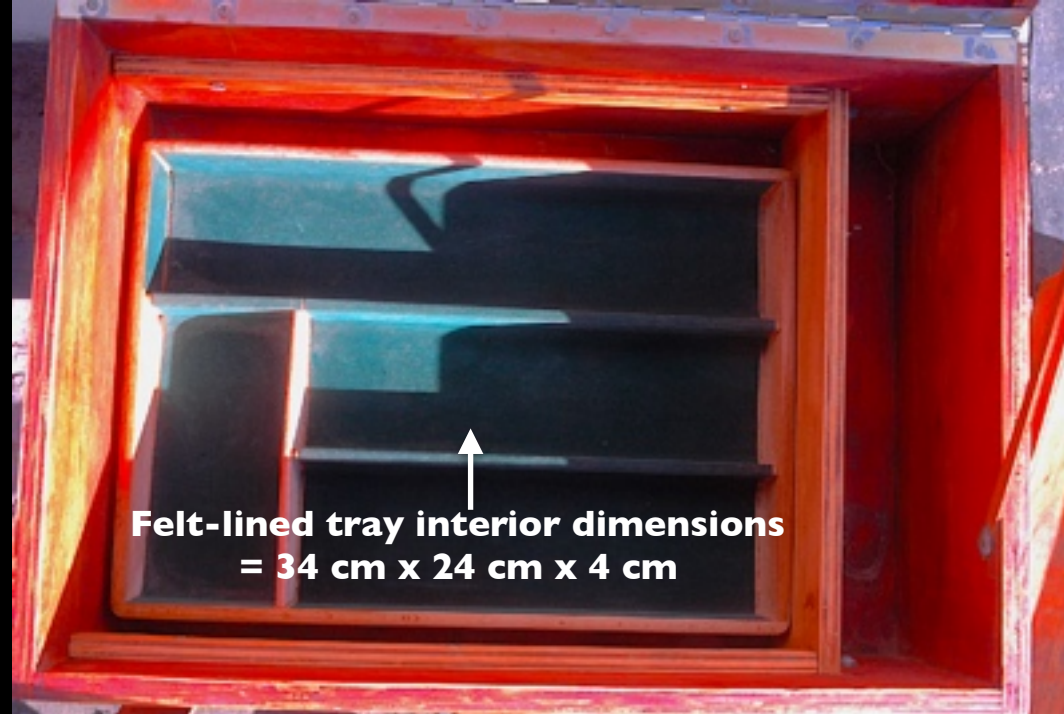


This robust marine plywood box has 1.5 cm walls around the outside with interior trays of 1 cm ply and 0.5 cm lath wood, brass latches and leather carry straps.

R1300 plus shipping.



**Large box interior dimensions
= 43 cm x 29.5 cm x 15 cm**



**Felt-lined tray interior dimensions
= 34 cm x 24 cm x 4 cm**

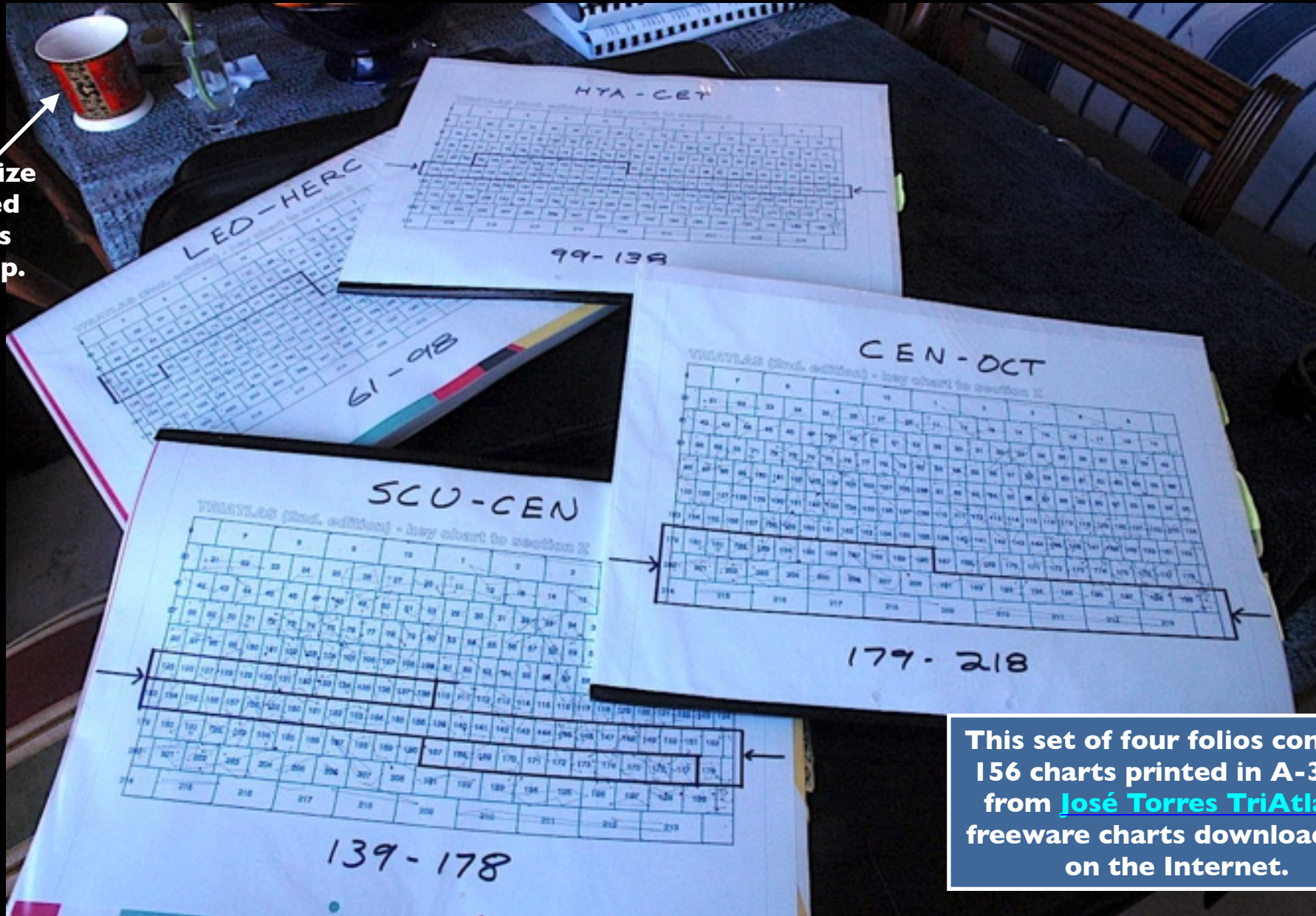


Upper tray interior dimensions = 28.5 cm x 20.5 cm x 7



**Large box exterior dimensions
= 46 cm x 32.5 cm x 18 cm**

Two sets of high-resolution field charts covering southern skies from 30° N to 90° S. Printed on heavy A-3 paper and bound in individual slipcases in an artist's portfolio case

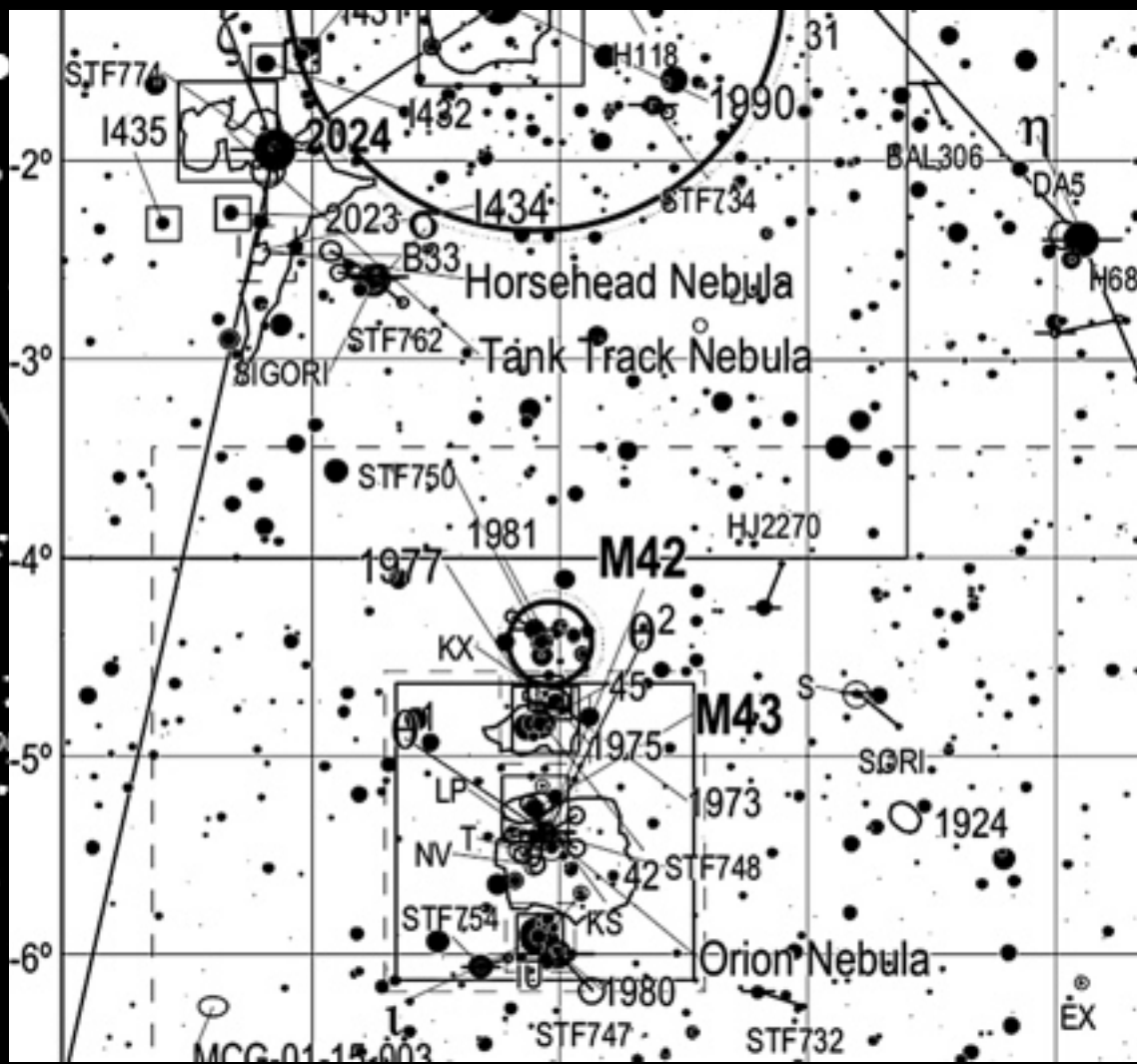
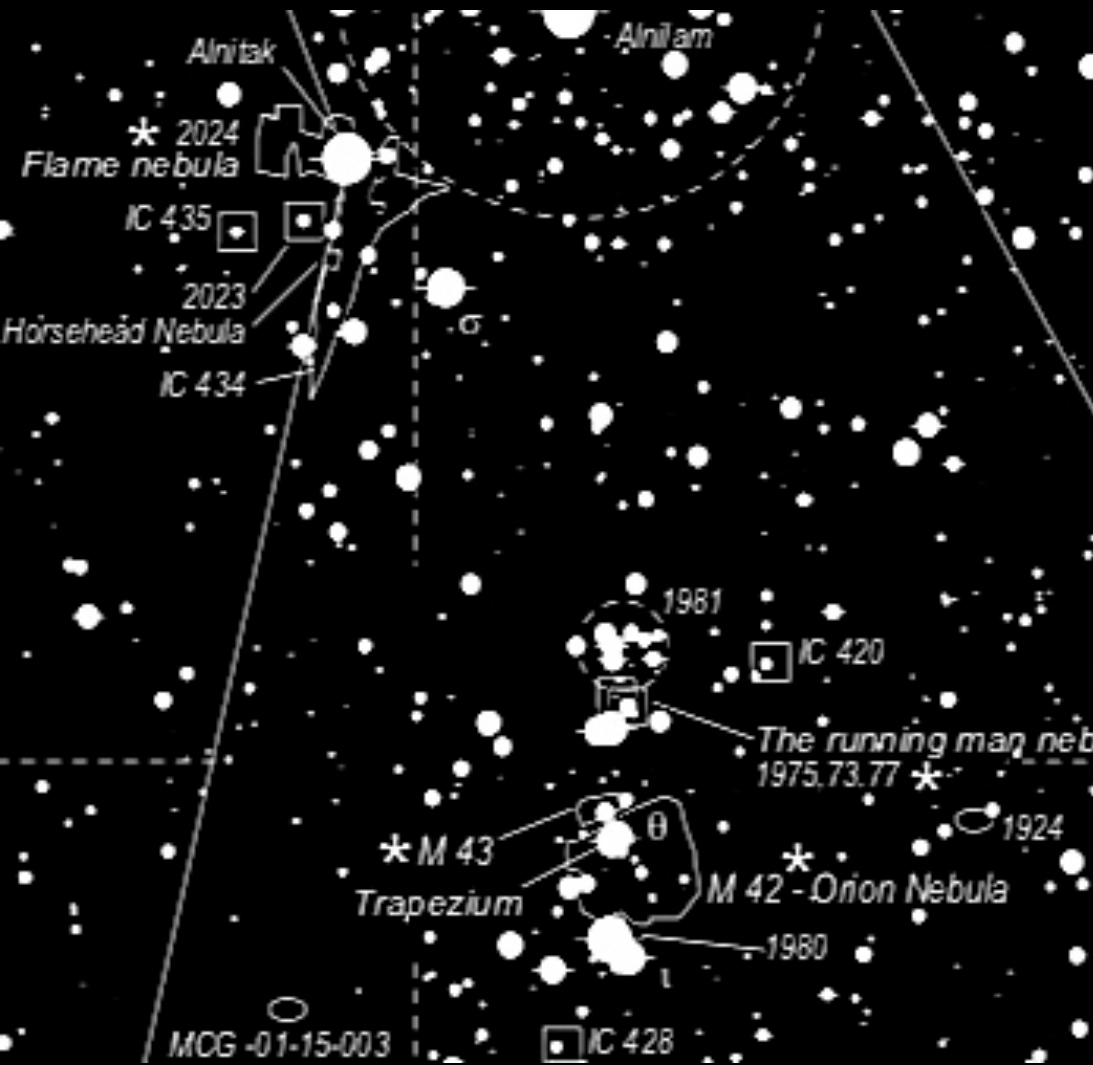


Relative size compared with this coffee cup.

This set of four folios contains 156 charts printed in A-3 size from [José Torres TriAtlas B](#) freeware charts downloadable on the Internet.

The field covered by each folio set is marked on both sides of the cover pages.





Orion & Horsehead regions in 2 volume [Deep Sky Hunter](#) deep sky atlas. These charts feature stars to magnitude 10.2 and DSOs to magnitude 14. The complete chart set comprises 101 A3 charts and 21 'zoom' charts of galaxy clusters and densely populated areas.

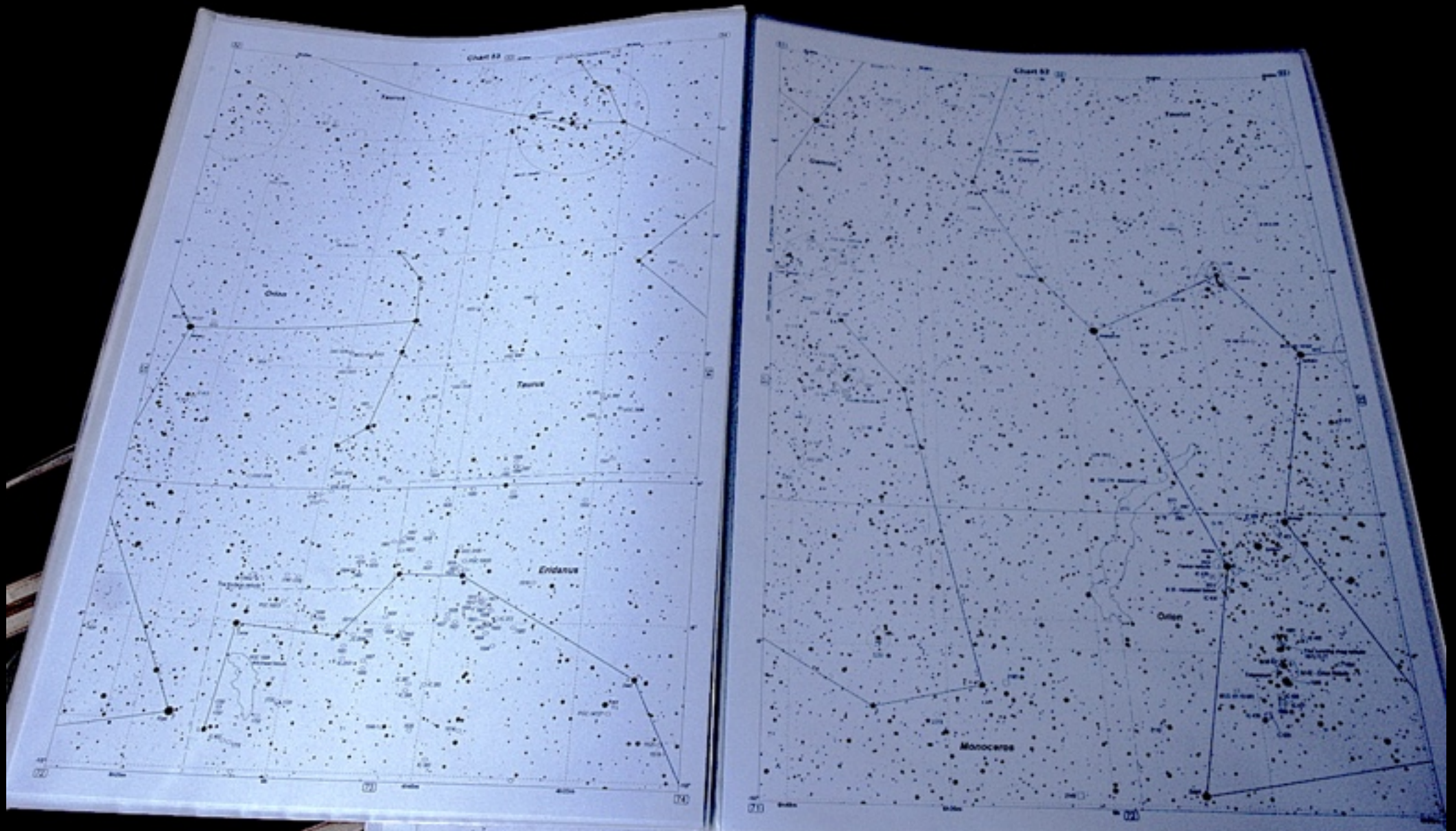
Orion & Horsehead regions in 4 volume, 156-sheet [José Torres TriAtlas B](#) chart set. Stars to mag 10.5 and DSOs to mag 14. At R9.6 rand per sheet, that's cheaper than you can print them locally.

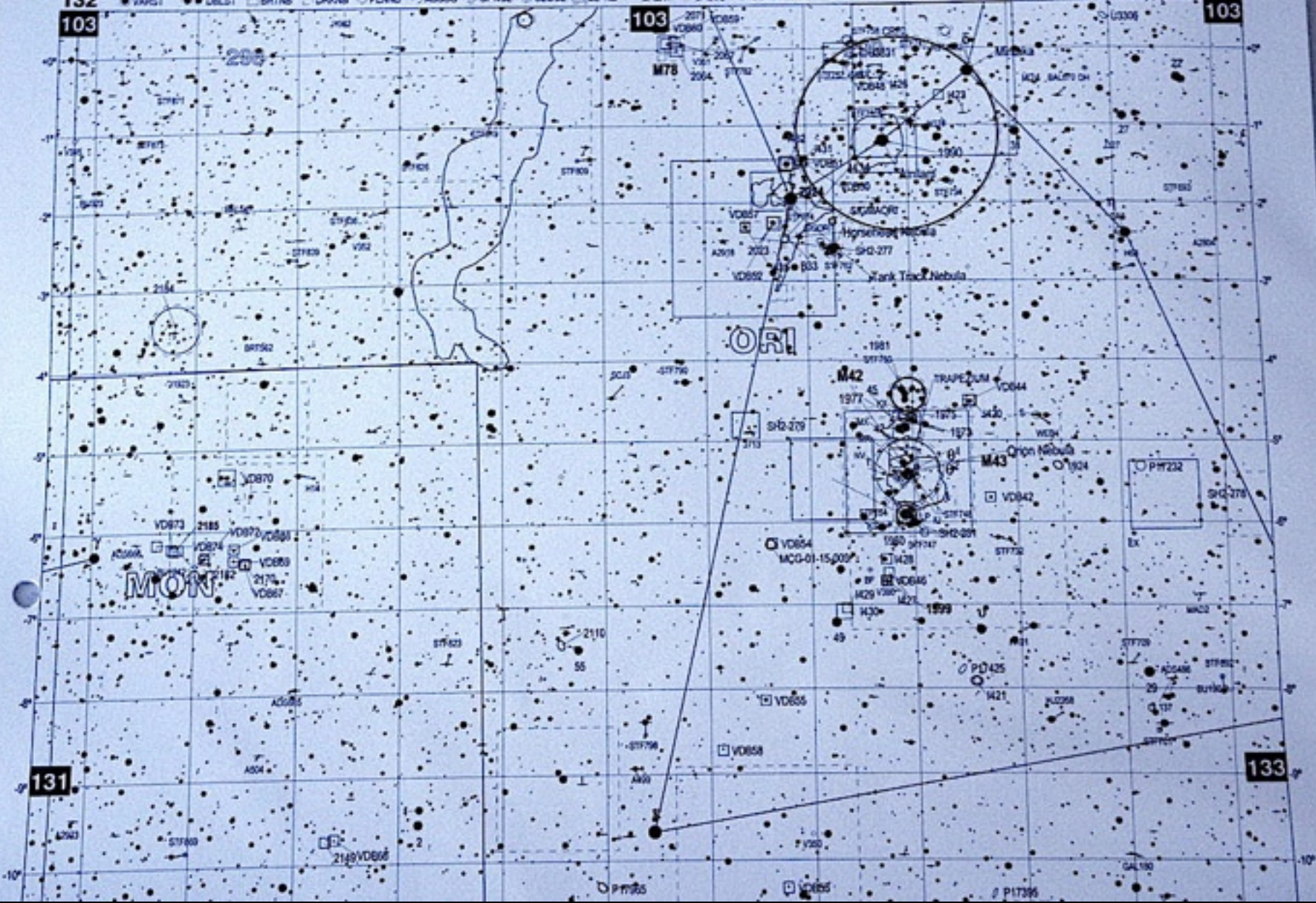
RI400 includes artist's hard-side zipper-opened portfolio case.

RI400 includes artist's hard-side zipper-opened portfolio case.

**Monoceros & Orion two-sheet set in
Vlasov *Deep Sky Hunter* chart set**

**When opened to two-page spread these
chart sets almost fill a card table, excel-
lent for general familiarisation or planning
a detailed observing session.**





Orion chart #132 in 4 volume
Torres TriAtlas B chart set

If it's in Virgo, it's in here. Chart 95 from the Torres TriAtlas B set.

